

FACADE ACCESS



SAYFAGROUP.CO.UK

SAYFA 

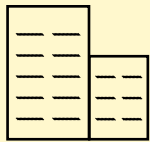
EDGESEIL™

DAVIT BASE SYSTEM

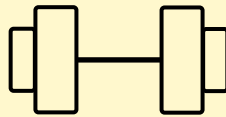
DURABLE & FLEXIBLE DAVIT BASE SYSTEM

The EdgeSeil™ Davit range is independently tested by SATRA to EN795:2012, PD CEN/TS16415:2013 and BS8610:2017.

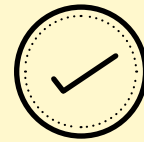
The Davit Bases are available manufactured from hot dip galvanised mild steel, 304 grade stainless with an option for a electro-polished finish or 316 grade stainless steel. Depending on the site location and specification of base service life varies between 10 and 60 years.



PART OF A FULL
EDGESEIL PRODUCT
FAMILY



HIGH STRENGTH
LONG LIFE
MATERIALS



THIRD PARTY
APPROVED AND
TESTED



300MM- 400MM BASE
WIDTH



200MM-600MM BASE
HEIGHT



SURFACE FIX OR CAST-IN
OPTIONS



10-60 YEAR PRODUCT
WARRANTY



VARIOUS SOCKET OPTIONS
FOR WEATHERING



PRODUCT OVERVIEW

Sayfa Group offer a Single and Two User system. A single rated system (15kN) may be required where the building structure cannot accept the design loads for two users. In addition, due to the significant forces required to achieve two users (21kN) some Davit base and reach configurations will only meet a single user rating.

A Two User davit may be preferable as a single Davit arm can be 'rigged for rescue'. This reduces the cost for the number of bases and arms. Typically for building maintenance

Davits will be at 3000mm centres. For building maintenance, such as glazing replacement or using tools on a curtain walling; centres will be at 1500mm and/or for any lifting/lowering on the centre line of the panel.

The Davit Bases are available manufactured from hot dip galvanised mild steel, 304 grade stainless with an option for electro-polished finish or 316 grade stainless steel.

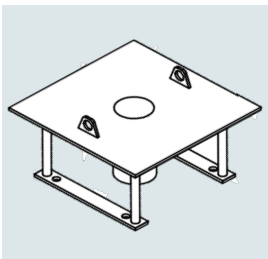
To achieve BS8610:2017 the Davit Arm and Davit Base must be tested

together. The number of users and reach is different per application or base type. Please refer to each individual technical data sheet for the product rating.⁷

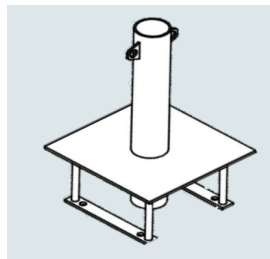
The EdgeSeil™ Davit range is independently tested by SATRA to EN795:2012, PD CEN/TS16415:2013 and BS8610:2017.

The service life varies between 20 and 60 years. Depending on the site location and specification of base.

BASE VARIANTS

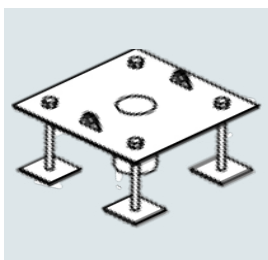


DBC-0204-0000-SS-1U

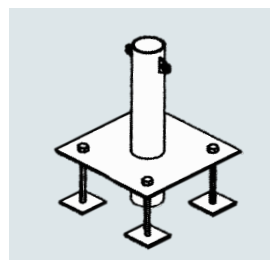


DBC-0204-0450-SS-2U

DBC - Cast-in davit base that ties to the rebar and is cast in to the concrete slab at the initial pour stage. This method is the most cost effective for both the initial installation and general life cycle costs. Suitable for single and two users with 200mm to 650mm sockets/weathering posts.



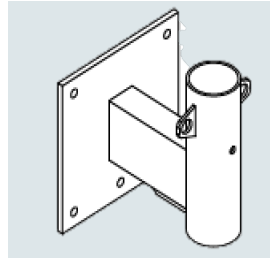
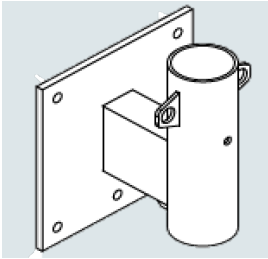
DBA-0228-0000-SS-2U



DBA-0228-0450-SS-2U

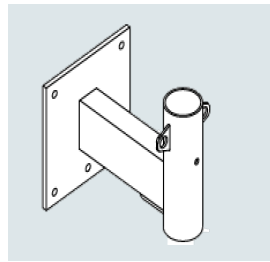
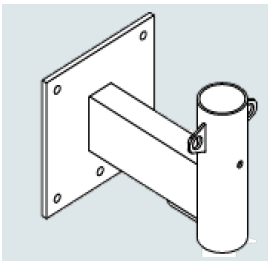
DBA - Similar to the DBC however the rebar tie in is adjustable in height. Suitable for single and two users with 200mm to 650mm sockets/weathering posts.

BASE VARIANTS CONT.

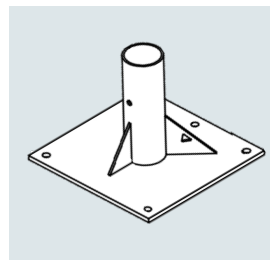
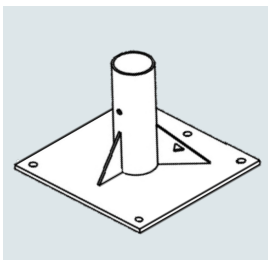


DBW - Often residential and commercial buildings requiring rope abseil access will have 1100mm parapets, this base is surface fixed to these with varying levels of projection so it can be concealed within the curtain walling.

DBW-0300-0120-HG-2U DBW-0300-0200-HG-2U

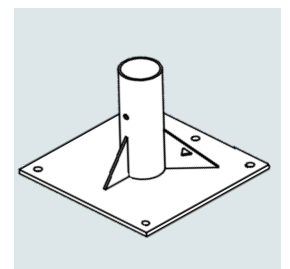
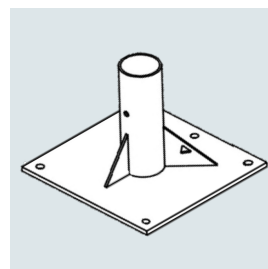
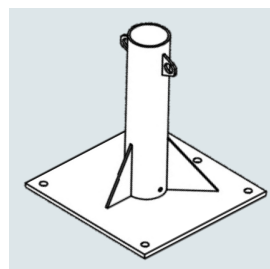
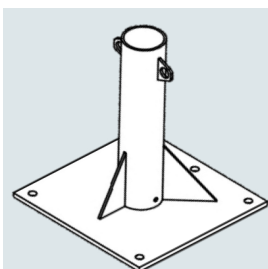


DBW-0300-0300-HG-2U DBW-0300-0300-SS-2U

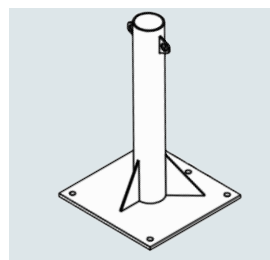
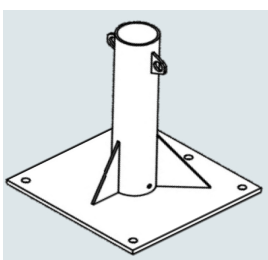


DBS - This is a surface mounted range suitable for chemical resin / anchor fixings. Provides single and two user options with 200mm to 650mm weathering posts / sockets.

DBS-0300-0200-HG-2U DBS-0400-0300-HG-2U

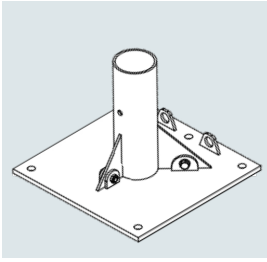


DBS-0400-0450-HG-2U DBS-0400-0550-HG-2U DBS-0300-0200-SS-2U DBS-0400-0300-SS-2U

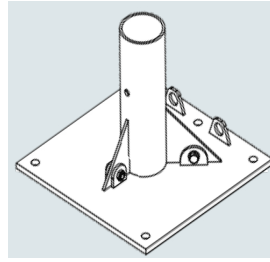


DBS-0400-0450-SS-2U DBS-0400-0650-SS-2U

BASE VARIANTS CONT.

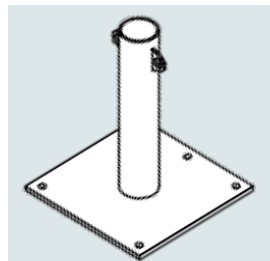


DBL-0400-0300-SS-2U



DBL-0400-0300-HG-2U

DBL - A low profile or removable socket for surface fixings beneath slabs or access panels. Particularly suitable for balconies, decks or green roofs.



DBN-0400-0450-SS-2U

DBN - This is a specially developed base without reinforcement struts. It is only suitable two users at 1500mm arm reach or 1 user at 2000mm arm reach only.

DESIGN, OPERATION & WARRANTY

Design of Roof Safety and Facade Access systems should be in accordance with BS7883:2019.

Sayfa Group products are independently tested and compliant to all current standards.

The ongoing use of these systems is subject to legislation that applies to the building owner or tenant. Operations and Lifting Equipment Regulations 1998 (LOLER) and The Provision and Use of Work Equipment Regulations 1998 apply.

Warranties are 10 Years for the Davit Arms and 30 Years with Sayfa+. Davit Base Warranties are 10 Years to 30 Years with Sayfa+. All subject to application and project specific specifications.

“The range of roof safety and abseil solutions as well as service from Sayfa team, ensured this Grade I listed building maintained it’s architectural integrity.”

Design Manager, Regents Crescent



GET IN TOUCH

SAYFAGROUP.CO.UK

ENQUIRIES@SAYFAGROUP.CO.UK

UNIT B1 - RESEARCH POINT
SHEPSHED,
LEICESTERSHIRE,
LE12 9NH

+44 1509 509 273

