

FACADE ACCESS



SAYFAGROUP.CO.UK

SAYFA 

EDGEREIL™

TWIN TRACK DAVIT

DAVIT RAIL SYSTEM FOR FACADE ACCESS AND HEIGHT SAFETY

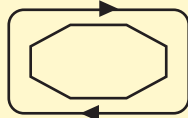
The EdgeReil™ Twin Track Davit (patent pending) is a transformative abseil system that allows the users continuous horizontal and vertical access across the building facade.

As an innovation of socketed davit, the system can be incorporated continuously on the building perimeter, allowing a single 'rig' and 'drop' for the cleaning of an entire elevation.

The product is suitable for personnel and materials, lifting and lowering. SATRA tested to BS8610:2017 and with a safe working load of 300kg.

20x

FASTER TO
OPERATE THAN
DAVIT BASES /
SOCKETS



CONTINUOUS
VERTICAL AND
HORIZONTAL ACCESS



THIRD PARTY
APPROVED AND
TESTED



2 USER TESTED - 21kN
RATED



SAFER ROPE DEVIATION



CLEANER LESS CLUTTERED
ROOF TOP



FLEXIBLE DESIGN TO SUIT
ANY BUILDING LAYOUT



ALMOST ZERO VISUAL
IMPACT AND COLOUR



30 YEAR WARRANTY
AVAILABLE WITH SAYFA+



PRODUCT INFORMATION

The EdgeReil™ Twin Track system is a combined track and davit product manufactured from interlocking structural aluminium sections with connecting 316 stainless steel bearing based travellers.

This 'twin track' system reduces the design loads to substructure associated with conventional davits but still provides the parapet clearances to prevent the need to include service or factored load requirements in the design.

EdgeReil™ is typically supplied to project specific requirements and pre-assembled for quick and easy installation on site.

The EdgeReil™ Davit shoulder is removed for storage when not in use ensuring the system has a low visual impact.

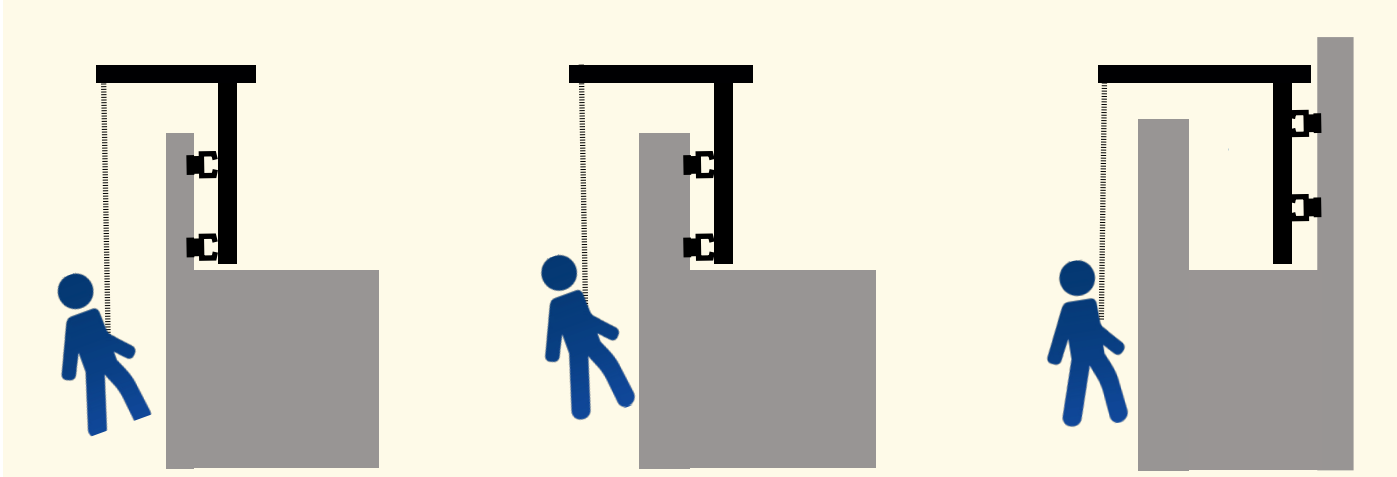
The system is most suitable for high-rise residential and hotels as well as student accommodation and office buildings.

With the removeable shoulder or boom the

system has almost zero visual impact compared to other systems and generally avoids any roof penetrations. This reduces the risks of cold spots and latent weathering issues increasing the efficiency of the building.

With 3m fixing centres the system can be lower cost than conventional davit sockets but with lower ongoing LOLER and cleaning or maintenance costs.

APPLICATIONS



FIXED TO UC / PRIMARY STEEL

FIXED TO CONCRETE PARAPET

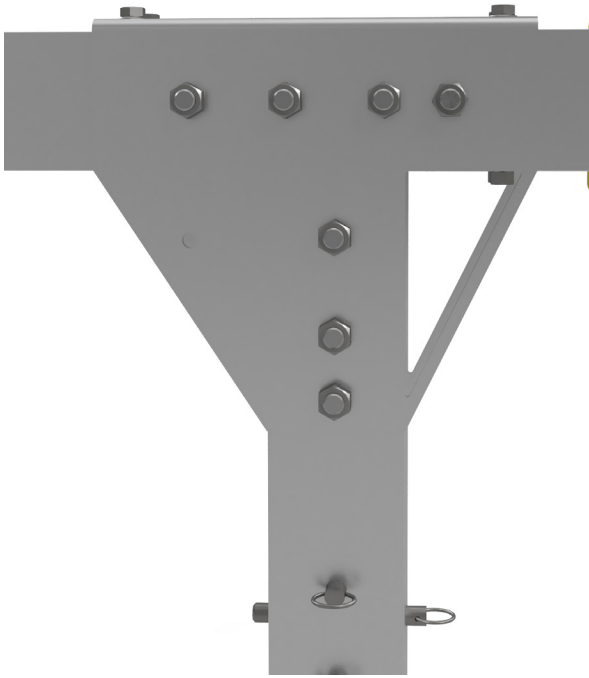
FIXED TO PLANT / LOUVRES STEEL WORK

LINKED SYSTEMS

EDGESEIL RAIL

FULLSECURE TRACK

EDGESEIL DAVIT



“The versatility of the Sayfa abseil rail system was a key aspect of the product selection. The experience, knowledge and commitment of the team helped us achieve successful delivery of the project”

Design Manager, Hilton Curio London

DESIGN & INSPECTION

All systems should be designed and installed by an experienced contractor.

Typical details, BIM files and technical data sheets are available however project specific guidance can be provided too.

The factored forces can be as high as 15 - 27kN depending on the number of users for the system.

It is a legal requirement for these systems to be tested, maintained and certified annually.

This must be performed by a trained and competent individual at least once every 6 months or sooner if subject to adverse conditions or use.

Approved partners for the design, installation and retest works are available

on the Sayfa Group website.

These partners are trained by Sayfa Group and will help keep you compliant with detailed reporting and testing according to BS7883:2019 requirements.

Warranty Applications and Operating Manuals are also available from the Sayfa Group Web Site.



GET IN TOUCH

SAYFAGROUP.CO.UK

ENQUIRIES@SAYFAGROUP.CO.UK

UNIT B1 - RESEARCH POINT
SHEPSHED,
LEICESTERSHIRE,
LE12 9NH

+44 1509 509 273

