

SAYFA



SAYFAGUARD™ RAIL

Operating Manual

Table of contents

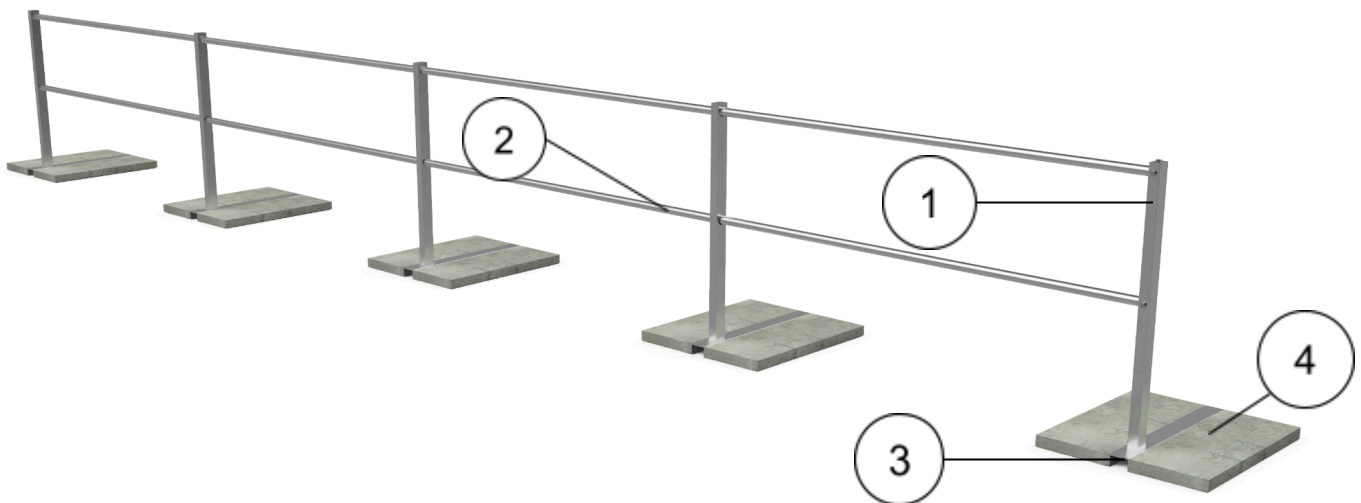
Product Overview	3
Operations	4
Safe Use & Maintenance	5
Quick Assembly Guide	6
Maintenance	12
Technical specification	15

Product Overview

The Working at Height 2005 Act necessitates a safe system of work at height for the maintenance of all buildings. This legislation prioritises collective safety above individual or personal protection equipment. Free standing guardrail achieves this requirement version, and is defined as a counterbalance system that requires no penetration to the surface and is quick and easy to install with a single tool.

SayfaGuard™ Rail is a simple intuitive system which is in accordance with BS 13700:2021, BS 6180:2011 and BS EN 13374:2013.

Component Key	
1.	Upright posts
2.	Horizontal tube
3.	Base
4.	Paving slab



Operation

- Ensure that operation instructions have been read and fully understood prior to commencing work with the SayfaGuard™ Rail.
- SayfaGuard™ Rail is designed and tested to BS 13700:2021, BS 6180:2011 and BS EN 13374:2013.
- The systems and its components must be inspected for signs of deterioration and deformation prior to use. It must not be used if deterioration or deformation are present.
- Ensure fixings and components are securely fastened.
- Do not tamper with, modify or remove any of the parts of the system unless authorised by the manufacturer.

Safe Use & Maintenance

Please note the operation requirements for safe use.

Recertification of this system is required to be performed by a LOLER competent, our recommendation by a LEEA or WAHSA member company. The recommended intervals for the conditions below:

EN ISO 12944-2 C1 – C4 Environments : Intervals of 12 months.

EN ISO 12944-2 C5 - CX Environments : Intervals of 6 months*.

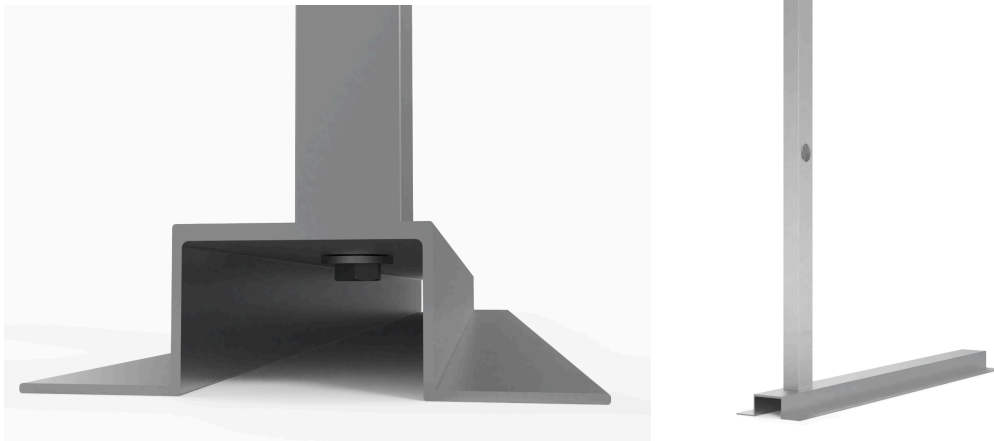
*For these environments please contact Sayfa group for product finishing options enquiries@sayfagroup.co.uk

Please contact Sayfa Group for Inspection Plan cost or view approved contractors at www.sayfagroup.co.uk

Quick Assembly Guide

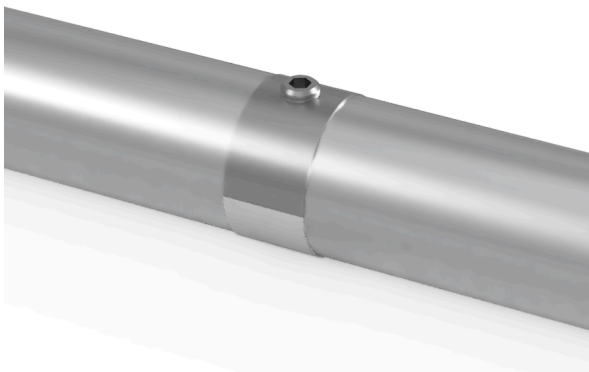
Step 1 (Factory assembled unless requested component form for logistics / handling)

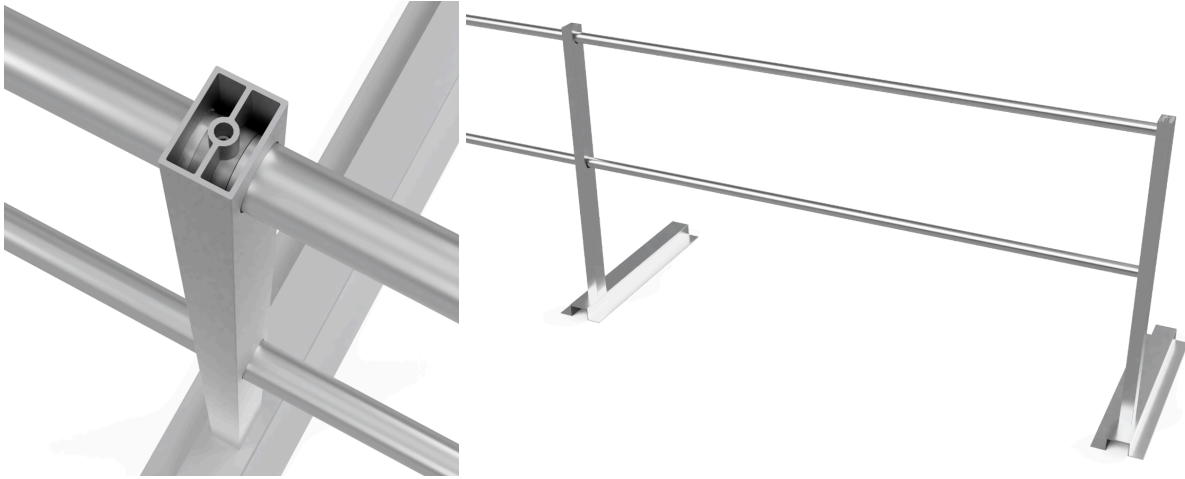
Place the guardrail base and the upright together with the hole matching to the centre of the upright. Attach the 2 components together with a spring washer and a M12x50 hex-head bolt (supplied).



Step 2

Set out the base and uprights at 3m centres and place the horizontal tubes across. Once completed secure the 2 horizontal tubes with the clamps provided and they are tightly attached. Tighten the clamp together using an align key and adjust the rail until the joining reaches the middle of the upright.

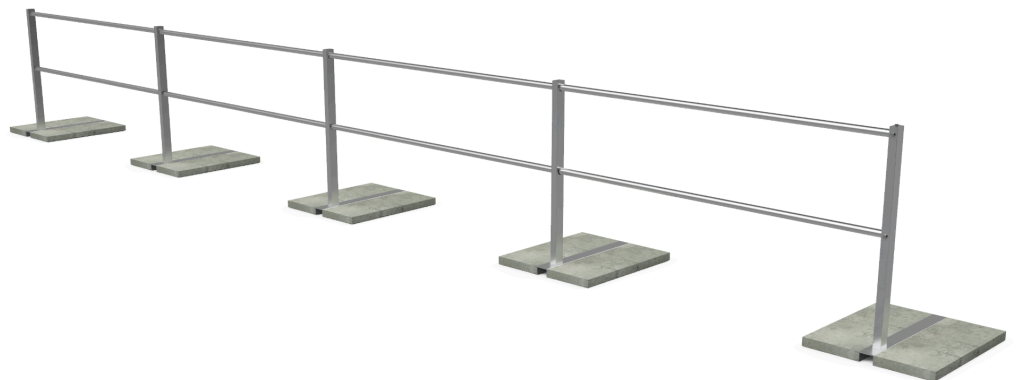




Step 3

Option A - Concrete blocks

Once everything is secured and tightened, place the 28kg paving slabs on either side of the baseplates.



Option B - Rubber blocks (available summer 2024)



Step 4

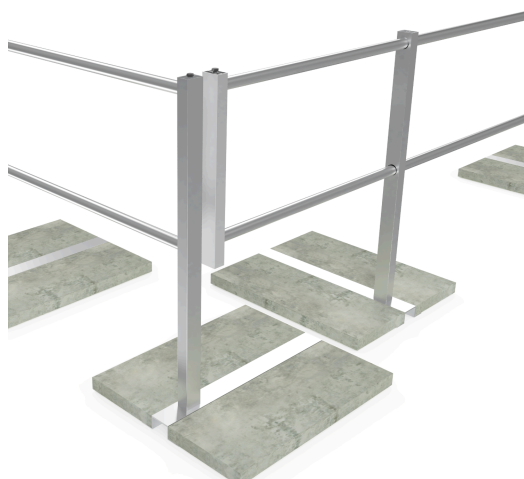
These should be handled carefully. Finally secure the 2 end upright posts and the horizontal tubes together with an M12 fixing on the top.



Step 5

Option A

If the system has a corner, add an End post to the end of the 2 tubes and secure together with 2 M12 bolts.



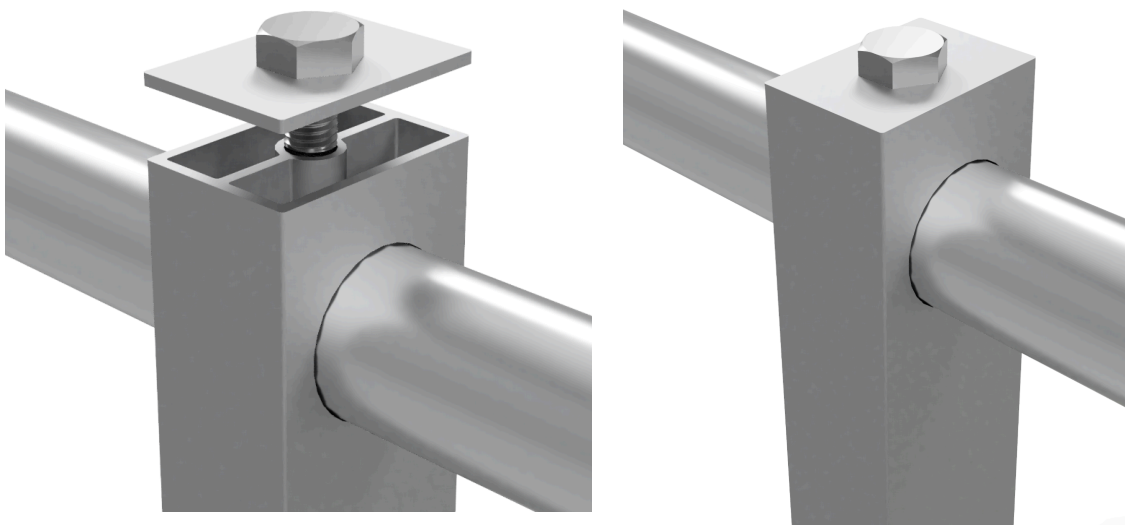
Option B Type 166C Key Clamp type connectors can be used.

If the system has a corner, add Key Clamp 166C to each end and fasten together to the horizontal rail. Insert the vertical handrail in between the clamps and tighten together with an align key.



Step 6 (Optional component)

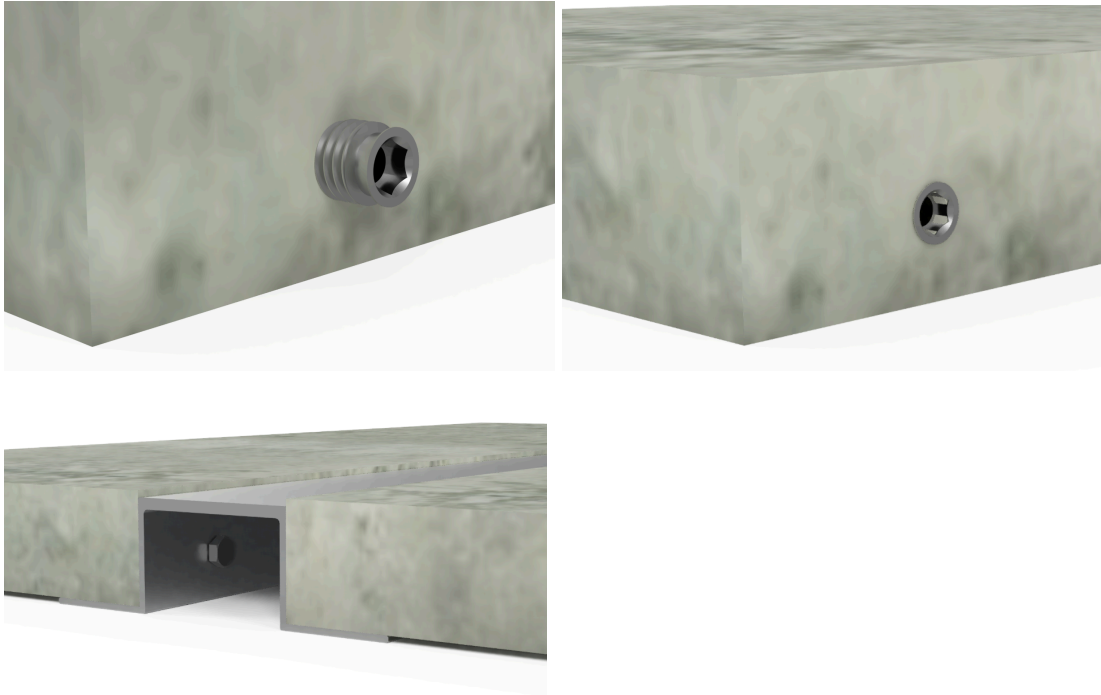
For aesthetic purposes, an aluminium cap is supplied and fastened together with M12 bolt using an impact driver.



Step 7 (Optional components)

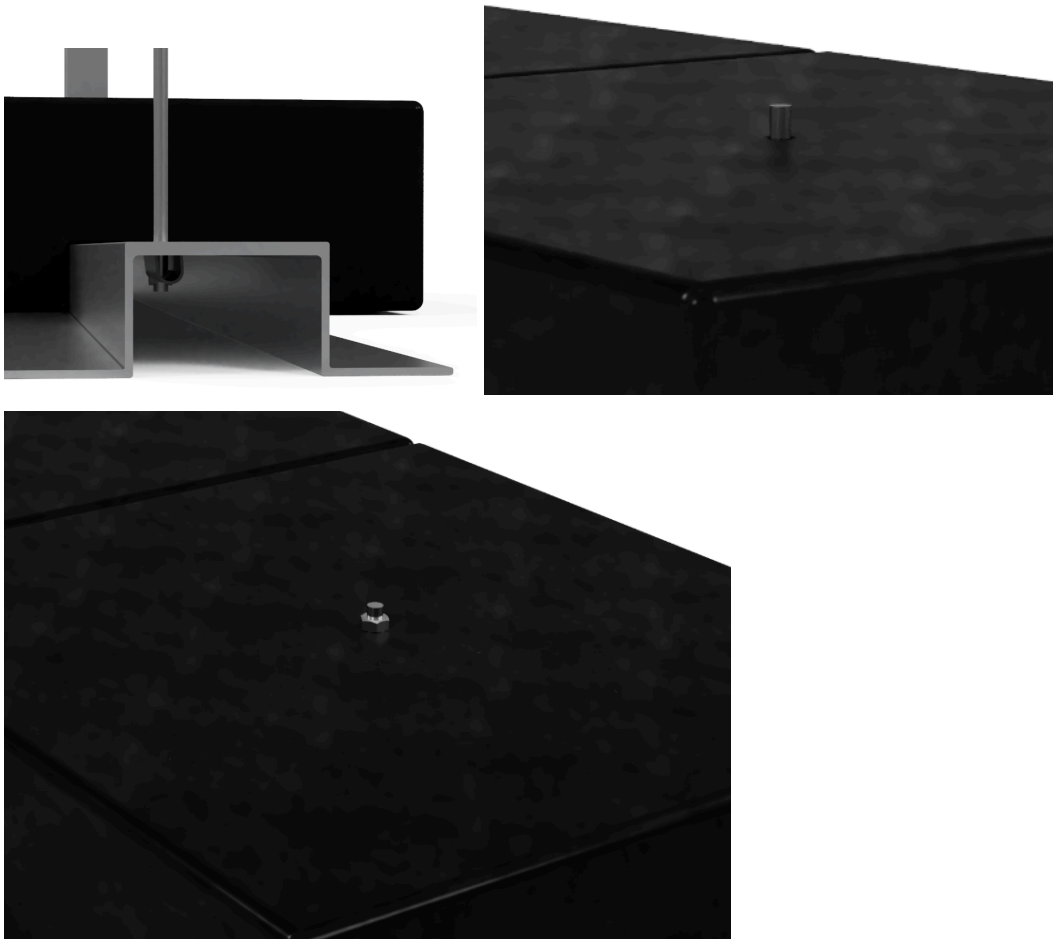
Mechanically Securing Concrete Blocks

For mechanically securing the concrete to the baseplate, a threaded insert will be screwed into the concrete and the baseplate will be secured together with an M8 hex bolt.



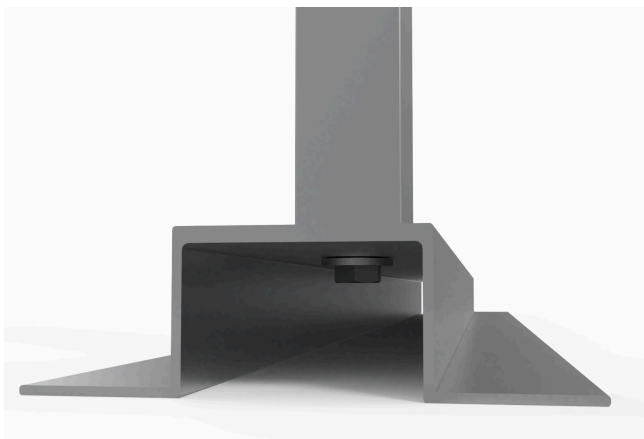
Mechanically Securing Rubber Block

For mechanically securing the rubber blocks to the baseplate, a M8x100 toggle and secure tightly on the underside of the baseplate with a M8 stud, place the block on top so that the stud is showing and secure it down with an M8 nut.



Step 8

Some vertical adjustment for alignment of the horizontal rails can be provided by using a heavy washer or spacer and spring washer.



Maintenance



SayfaGuard™ should be assessed and recertified by a height safety inspector at intervals of 12 months. For corrosive and harsh environments more frequent assessments are required.

SayfaGuard™ must be cleaned using a damp or dry cloth. Chemicals which can damage its components must never be used.


If there is evidence of deterioration or deformation due to overloading of the system, then it must be reported to the responsible person.

A record of inspections must be kept up to date.

The following checklist outlines the criteria for ensuring the safe use of the davit system. The system must be maintained by a height safety inspector.

Component	Inspection criteria	Pass Y/N	Action taken	Date
	Upright post Inspect the upright post and ensure there is no deterioration or cracks.			
	Horizontal tube Inspect the horizontal tube and ensure there is no deterioration or cracks.			

	<p>Guardrail base Inspect the guardrail base and ensure there is no deterioration.</p>			
	<p>Counter Weights Inspect the paving slabs and ensure there are no cracks or deterioration.</p>			
	<p>End posts Inspect the End posts and ensure there is no deterioration or deformation.</p>			
	<p>Upright Top Cap Inspect the cap and ensure there is no deterioration or deformation.</p>			

 A cast metal component with a complex shape, featuring a central cylindrical section with a threaded hole, and several flared, wing-like sections extending from it.	<p>Type 150C Components Inspect the cap and ensure there is no deterioration or deformation.</p>			
 A cast metal component consisting of two cylindrical sections joined at a 90-degree angle. Each section has a small circular opening on its side.	<p>Type 166C Components Inspect the cap and ensure there is no deterioration or deformation.</p>			

Technical Specification

All SayfaGuard™ systems are manufactured from 6082-T6 aluminium and A2-70 grade stainless steel fixings.

Features

Can be compatible with SayfaWay™

Dimensions

Code: GRD-POST

Width: 60mm

Height: 1050mm

Length: 42mm

Weight: 2.1Kg



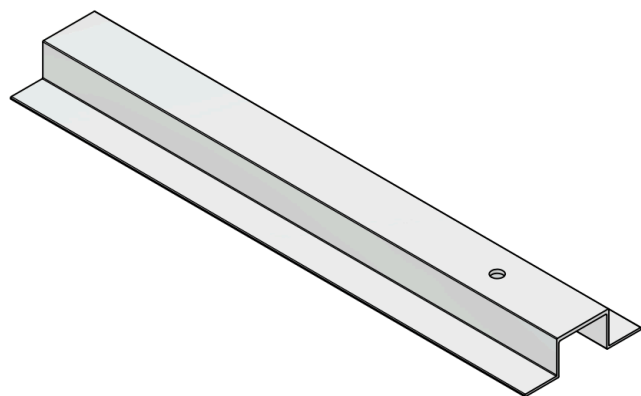
Dimensions

Code: GRD-PLATE

Width: 170mm

Length: 750mm

Weight: 1.8 Kg



Dimensions

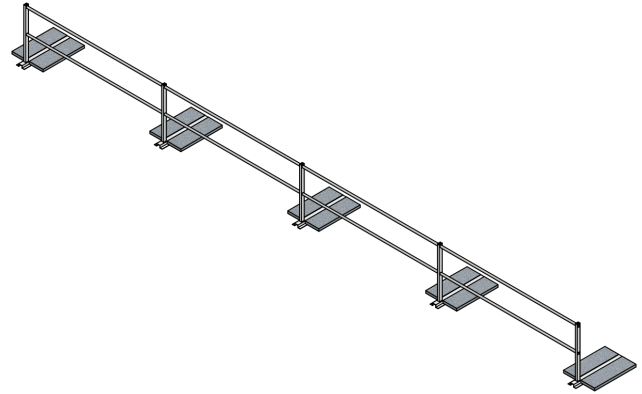
Code: SGR.12000.1100.MF

Width: 12000mm

Length: 1100mm

Weight: 32.7 Kg (Exc. concrete slabs)

Total Weight: 54.3 Kg



Material specification

6061-T6 Structural Aluminium Weight stand (3.00mm Rubber backing optional)

6061-T6 Structural Aluminium Horizontal Rail (3.00mm Rubber backing optional)

Concrete paving slabs (3.00mm Rubber backing optional)

A2-70 M12 Hex head bolt

Cast and Hot Dip Galvanised Type C150 and C166 components

Installation / fixings

Free standing

Test standards

- BS 13700:2021 Permanent counterweighted Guardrail system.

Related standards

- BS 6180:2011 Code of practice barriers in and about buildings

- BS EN 13374:2013 Temporary edge protection systems test methods

Product warranty

5 Years Standard Warranty

10 Years SAYFA+ Warranty

Please refer to the Warranty Application available on www.sayfagroup.co.uk.



GET IN TOUCH

SAYFAGROUP.CO.UK

ENQUIRIES@SAYFAGROUP.CO.UK

UNIT B1 - RESEARCH POINT
SHEPSHED,
LEICESTERSHIRE,
LE12 9NH

+44 1509 502 273

