

FACADE ACCESS



SAYFAGROUP.CO.UK

SAYFA 

EDGEREIL™
ABSEIL RAIL SYSTEM

ABSEIL RAIL SYSTEM FOR FACADE ACCESS AND FALL ARREST

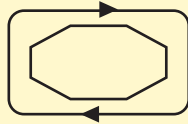
The EdgeReil™ system (patent pending) is an abseil rail that allows the users continuous horizontal and vertical access across the building facade.

EdgeReil™ is a flexible system that can be curved and integrated seamlessly with other products in the range. It can be curved and act as a single system for rope access, fall restraint and arrest.

The product is suitable for personnel and materials, lifting and lowering. SATRA tested to BS8610:2017 and with a safe working load of 600kg.

20x

FASTER TO
OPERATE THAN
POSTS OR SOCKETS



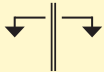
CONTINUOUS
VERTICAL AND
HORIZONTAL ACCESS



THIRD PARTY
APPROVED AND
TESTED



3 USER TESTED - 27kN
RATED



IDEAL FOR INTERNAL
AND EXTERNAL USE



CLEANER LESS CLUTTERED
ROOF TOP



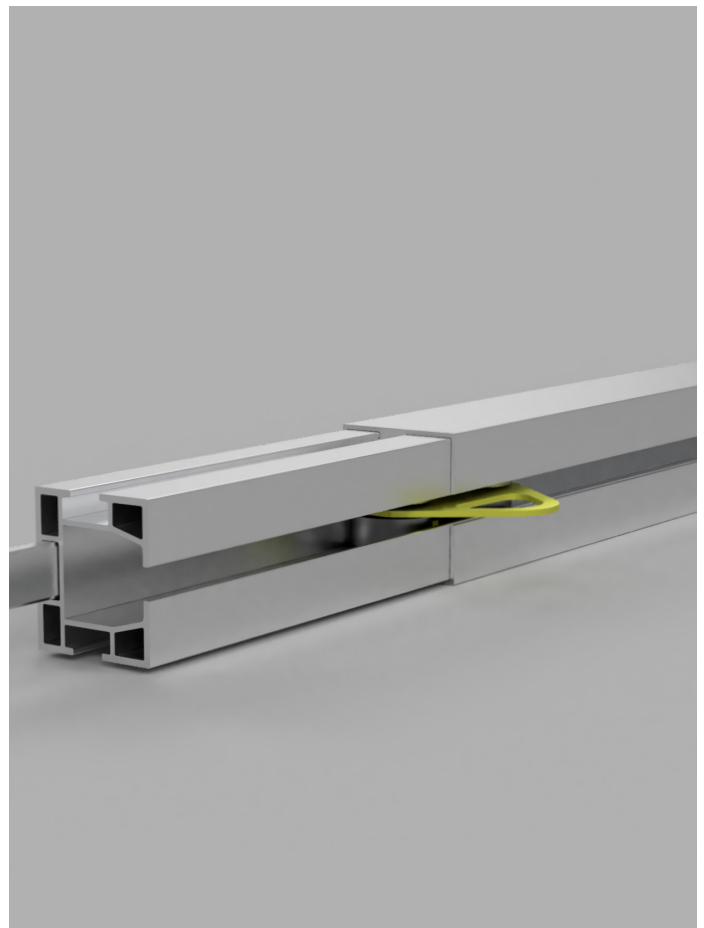
FLEXIBLE DESIGN TO SUIT
ANY BUILDING LAYOUT



LOW VISUAL IMPACT AND
COLOUR MATCH OPTIONS



30 YEAR WARRANTY
AVAILABLE WITH SAYFA+



PRODUCT INFORMATION

The EdgeReil™ Abseil Rail is an interlocking structural aluminium section acting as a track or 'monorail' providing continuous uninterrupted rope access, and rigid fall restraint or arrest.

The track can be curved for internal and external corners to fit the building form. It allows complete vertical and horizontal access without the need to re-rig.

EdgeReil features 316 grade stainless steel bearings which allow the

users to traverse across the elevation.

EdgeReil™ is typically manufactured to suit project requirements but can be supplied in standard lengths from 2m to 6m.

EdgeReil™ has a range of fixing options, it can be side fixed or top fixed to a substrate, such as structural steel or concrete.

The abseil system is ideal for fully glazed builds or complex facade designs which require

regular maintenance and cleaning both internally and externally.

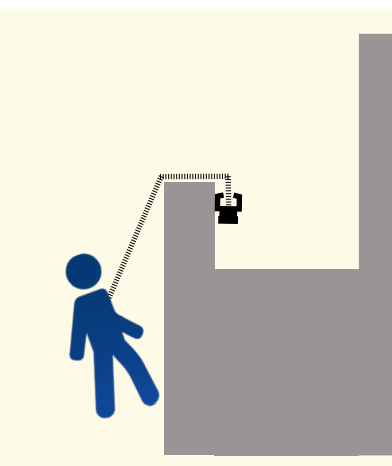
Although the product is typically incorporated into new build retail, office and residential it is retrofitted for warehousing and industrial buildings with fixing centres of 6m.

The rail has virtually zero visual impact. It can act as a dual purpose system to provide Fall Restraint / Arrest and still has lower ongoing LOLER costs and cleaning or maintenance.

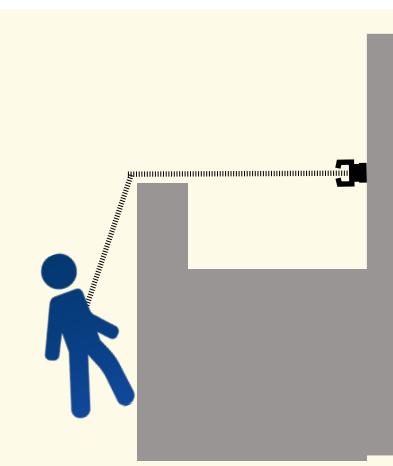
APPLICATIONS



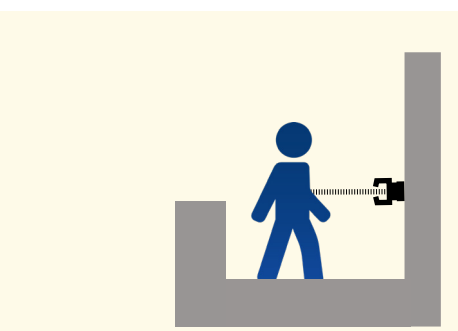
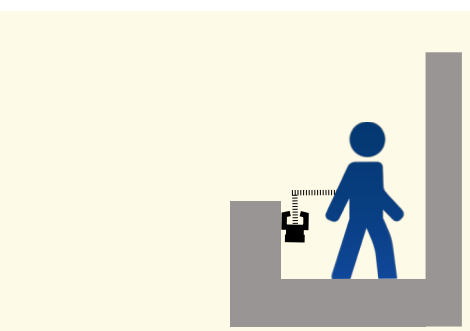
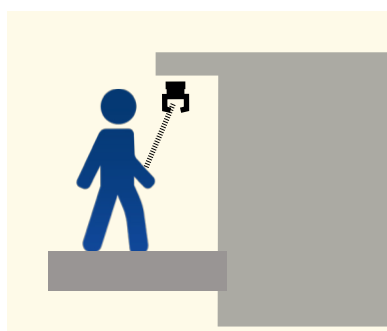
OVERHEAD SYSTEM



PARAPET MOUNTED



PLANT / LOUVRES OR STEEL WORK





“The versatility of the Sayfa abseil rail system was a key aspect of the product selection. The experience, knowledge and commitment of the team helped us achieve successful delivery of the project”

Design Manager, Hilton Curio London

DESIGN & INSPECTION

All systems should be designed and installed by an experienced contractor.

Typical details, BIM files and technical data sheets are available however project specific guidance can be provided too.

The factored forces can be as high as 15 - 27kN depending on the number of users for the system.

It is a legal requirement for these systems to be tested, maintained and certified annually.

This must be performed by a trained and competent individual at least once every 6 months or sooner if subject to adverse conditions or use.

Approved partners for the design, installation and retest works are available

on the Sayfa Group website.

These partners are trained by Sayfa Group and will help keep you compliant with detailed reporting and testing according to BS7883:2019 requirements.

Warranty Applications and Operating Manuals are also available from the Sayfa Group Web Site.



GET IN TOUCH

SAYFAGROUP.CO.UK

ENQUIRIES@SAYFAGROUP.CO.UK

UNIT B1 - RESEARCH POINT
SHEPSHED,
LEICESTERSHIRE,
LE12 9NH

+44 1509 509 273

