

MOBILE SYSTEMS



SAYFAGROUP.CO.UK

 **SAYFA**

SAYFA™ MOVE

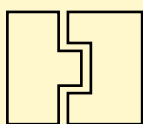
MOBILE DAVIT

PORTABLE, FREE STANDING MOBILE DAVIT SYSTEM FOR ABSEIL

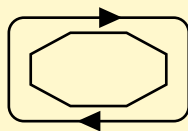
Sayfa™Move Mobile Davit is a portable Davit or rope access system, suitable for personnel and materials lifting or lowering.

The Sayfa™Move Mobile Davit is a mobile variant of the EdgeSeil™ Davit, equipped with portable weights and wheels which allows for easy movement fully weighted. It has a compact footprint and is available as a single or two user system.

The system is suitable for internal and external storage and folds to almost flat.



**MODULAR
DESIGN AND EASY
ASSEMBLY**



**SAFE USE HEAVY
DUTY LOCKING
CASTORS**



**INDEPENDENTLY
TESTED TO
EN795:2012**



**SAFE WORKING LOAD: 1
USER 100KG. 2 USER 200KG.**



**EASILY ASSEMBLED FROM
ALMOST FLAT FOLDED FORM.**



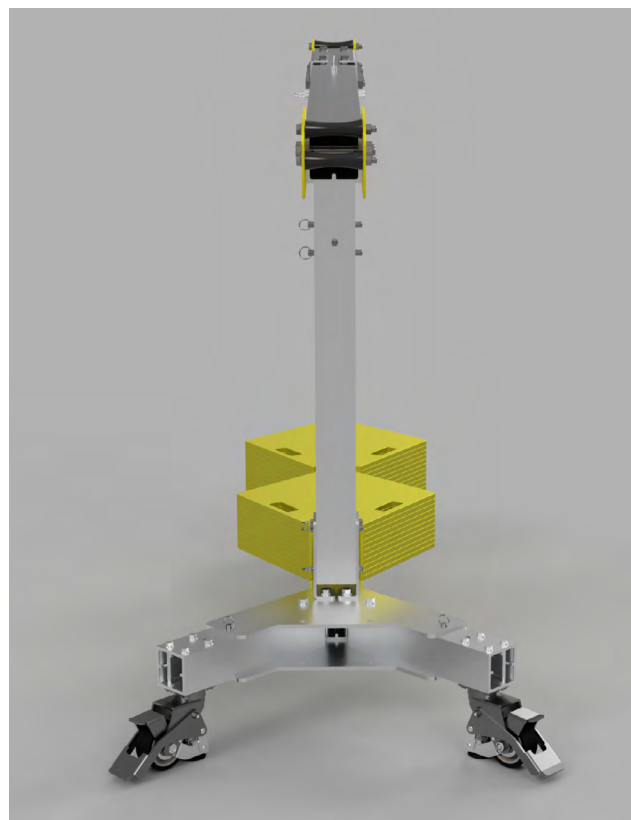
**NO TOOLS REQUIRED FOR
ASSEMBLY.**



**FREE STANDING AND FREE
WHEELING.**



**NO PENETRATION REQUIRED
TO ROOF SURFACE.**



PRODUCT INFORMATION

Sayfa™Move Mobile Davit is designed to provide an easily assembled, non-fixed abseil system, which can be manoeuvred from site to site or permanently set to one location without roof penetration.

All structural elements of the Sayfa™Move Mobile Davit are manufactured from extruded 6082-T6 aluminium with an anodised finish. With a 316 stainless steel either satin finished or powder coated safety level.

The composition of the system means it is suitable for internal or external storage.

The unit, which has a footprint of only 989x1935mm, is assembled

from three interlocking components. These components are secured by a total of nine stainless detent pins, which are also 316 stainless steel. All Sayfa™Move mobile units offer quick tool-less assembly and are demountable to almost flat.

Dependent on the users requirements, a total of either 16 (1U) or 24 (2U) individual weighted plates are required. Each plate weighs 21kg and is slotted on to the rear of the base plate.

These weights are manufactured from S275 mild steel, bright

zinc plates and polyester powder coated for increased durability.

Sayfa™Move Mobile Davit is tested to EN795:2012 Type B (no structural fixing for anchor) and E requirements (mass or friction based anchor).

There must always be at least 2 people present in the assembly and operation of the system. This is required to comply with manual handling and safe rescue standards.

Please refer to our Operating Manual for more detailed information such as specific sizes and weights as well as user instruction and inspection guidelines.

PRODUCT RANGE



ESW.0284.3070.1545

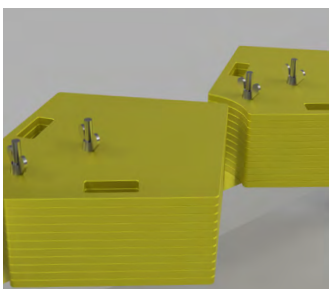


ESW.1084.3070.1545



ESW.1484.3070.1545

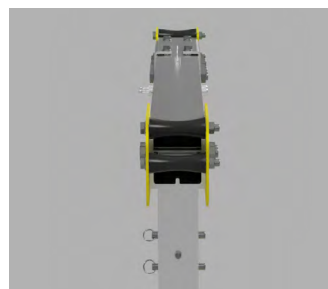
KEY FEATURES



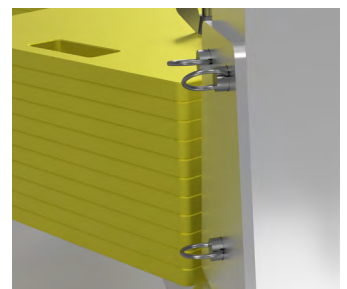
TOOL FREE ASSEMBLY WITH WINGNUTS



FOOT OPERATED CASTORS



NYLON ROLLERS FOR SMOOTH ABSEIL



DETENT PINS FOR TOOL FREE ASSEMBLY



GET IN TOUCH

SAYFAGROUP.CO.UK

ENQUIRIES@SAYFAGROUP.CO.UK

UNIT B1 - RESEARCH POINT
SHEPSHED,
LEICESTERSHIRE,
LE12 9NH

+44 1509 509 273

